

## WHAT CAN YOU DO TO HELP PROTECT OUR WATERWAYS?

Storm water receives minimal treatment before entering our creeks and rivers.

our actions at home can make a difference to the quality of water in our storm ponds, and the quality of water in our environment.



Pick up litter



Pick up after your pet



Wash your car at a car wash instead of in the driveway



Ensure your vehicle doesn't leak fluids



Prevent leaves and grass clippings from entering storm drains



Avoid fertilizers or pesticides, or choose organic products



Point downspouts toward lawns or use a rain barrel



Sweep up debris from your driveway



Drayton Valley's storm ponds are managed by The Town of Drayton Valley and are subject to maintenance to control weeds, algae and sediment build up.



DRAYTON VALLEY

# STORM PONDS



[www.draytonvalley.ca](http://www.draytonvalley.ca)

## IT STARTS WITH STORMWATER

When it rains and when snow melts, water flows from our rooftops, driveways, lawns, streets and sidewalks.

This stormwater washes from your home and through our community into storm drains, collecting dirt, gravel and pollutants along the way.

## IT'S HEADED TO OUR RIVERS

Stormwater empties into storm drains along our streets where large underground pipes carry it away to storm ponds. Without the treatment a storm pond provides, this water would head untreated to our rivers.

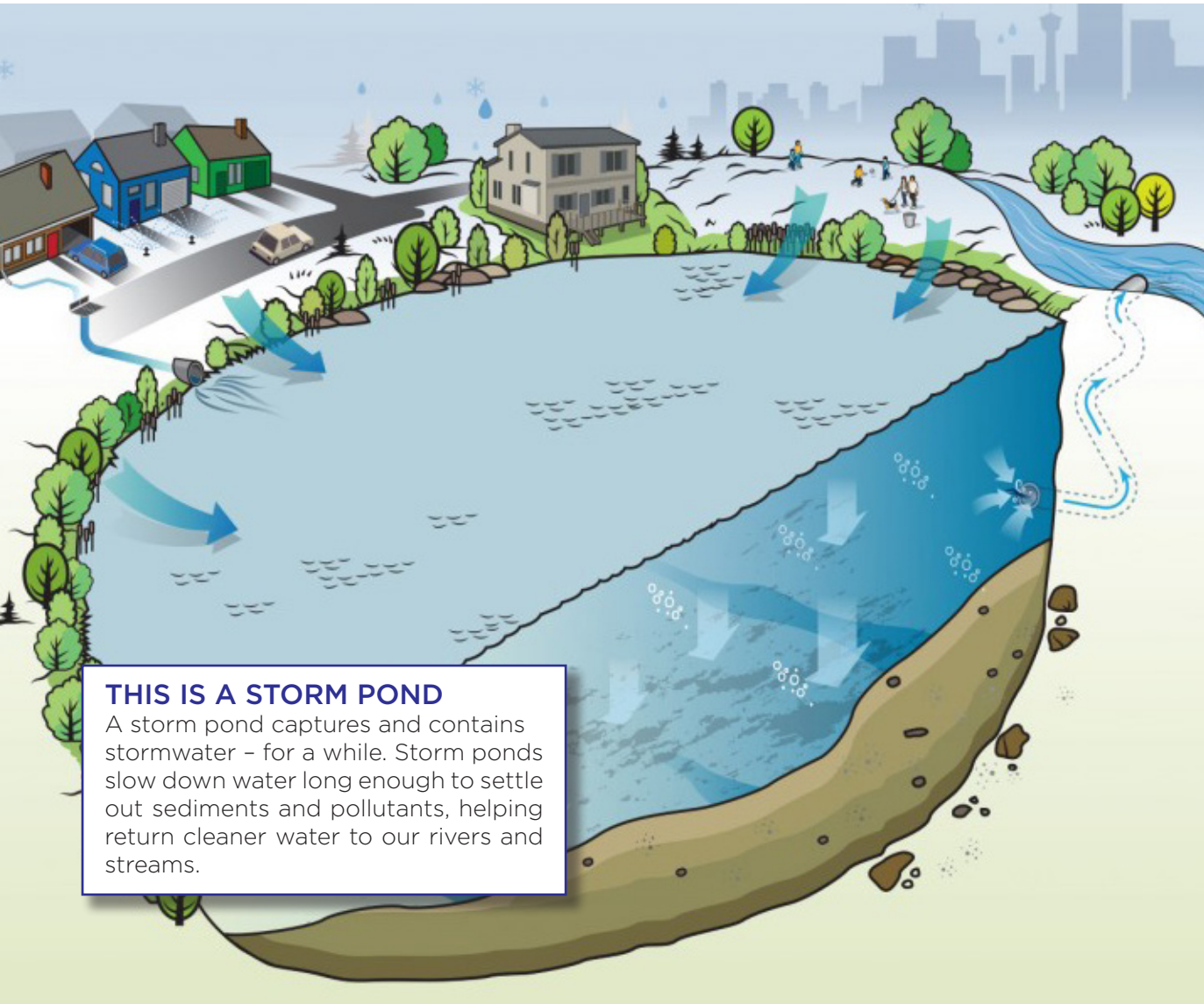
## WHY ARE STORMWATER PONDS IMPORTANT?

- Storm ponds protect our rivers by helping remove sediment, fertilizer, pesticides and other pollutants, as well as protecting our communities from flooding
- Holds excess rainfall to prevent flooding
- Helps to settle out sediment and other contaminants before being released downstream into creeks and rivers
- Creates habitat for wildlife
- Creates a park-like setting

## STORM PONDS PROTECT OUR WATERWAYS

Storm ponds work like naturally occurring ponds and wetlands. They move run-off from streets and away from homes and businesses. They slow the water down to relieve pressure on the stormwater system and improve the water's quality before it moves to our streams and rivers.

Storm ponds also protect our rivers by removing sediment, fertilizer, pesticides and other pollutants. They also prevent flooding by controlling the release of extra stormwater.



### THIS IS A STORM POND

A storm pond captures and contains stormwater – for a while. Storm ponds slow down water long enough to settle out sediments and pollutants, helping return cleaner water to our rivers and streams.