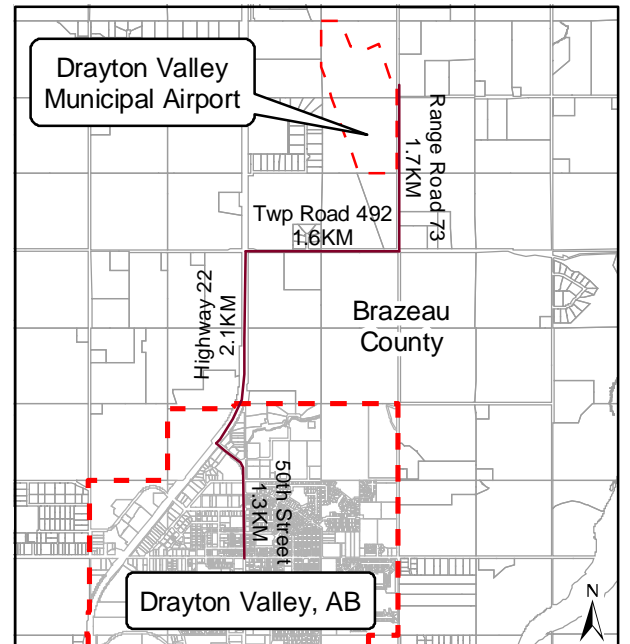
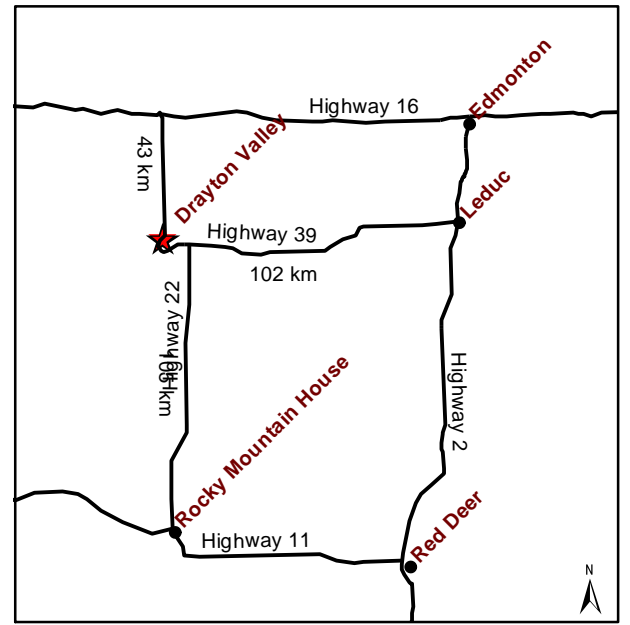
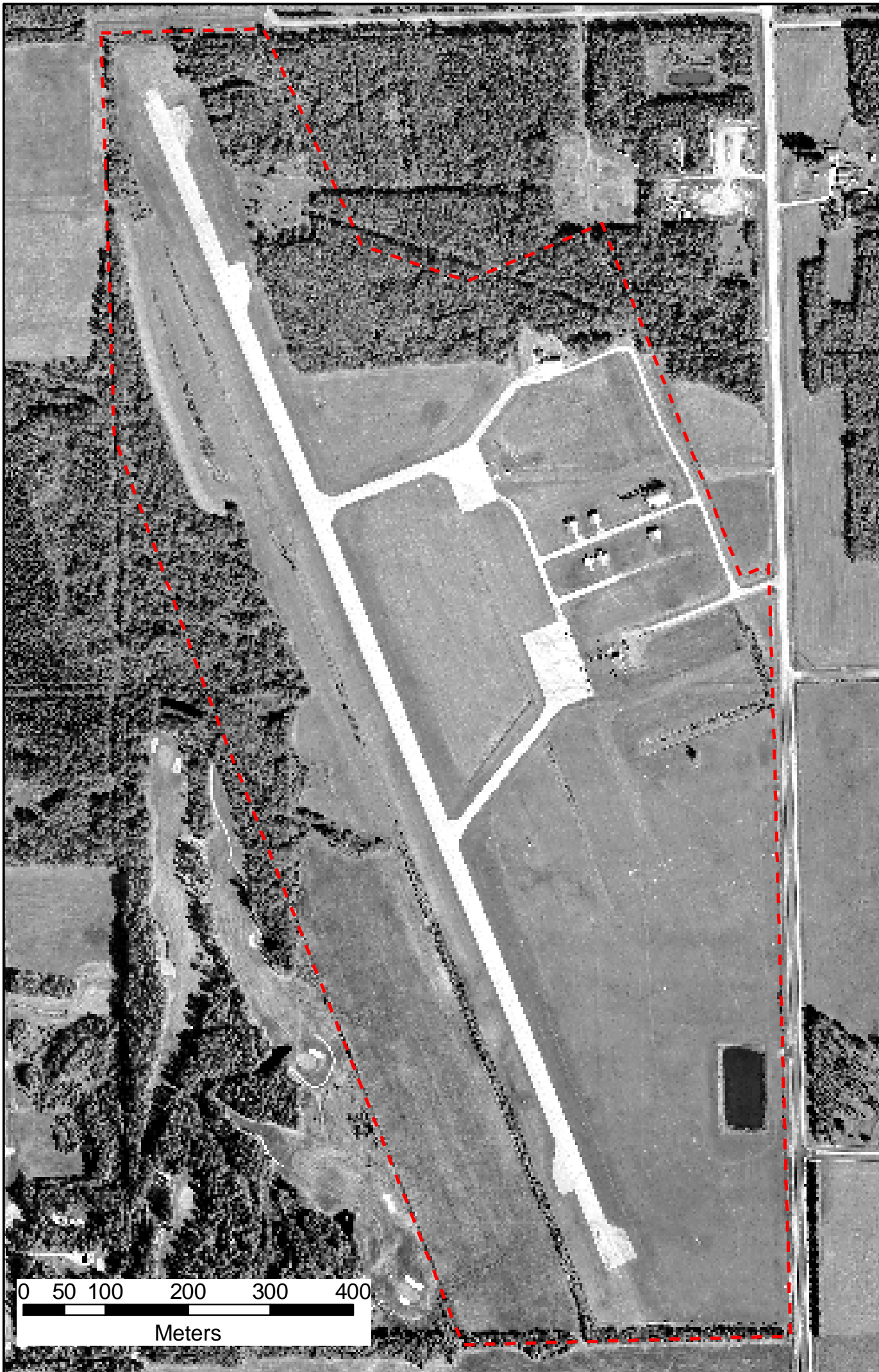


Drayton Valley Municipal Airport



Drayton Valley Municipal Airport

Latitude / Longitude
53° 15' 57.00" N / 114° 57' 30.00" W

Elevation
846 Metres / 2,776 Feet

Magnetic Variation
018°E (01/04)

Communications
CTAF/UNICOM 122.8

Runway (ID 14/32)
Length: 5,066' x 75' / 1,544m x 23m
Surface: Asphalt

Navids
NDB-DME
Channel: 043X
Frequency: 385

Fuel
100/130 Octane Gasoline (GREEN)
80/87 Octane Gasoline (RED)



Airport Enquiries Contact

Airport Manager
Phone: (780) 542 - 6114

Town of Drayton Valley
Phone: (780) 514 - 2200
Fax: (780) 542 - 5753

or through mail at

The Town of Drayton Valley
Drayton Valley Airport
5120 - 52nd Street
Box 6837 T7A 1A1

Drawn: January 24th, 2005
Revised: January 28th, 2005

The information provided within this map is provided in good faith for the interest and convenience of the public. The Town of Drayton Valley makes no representation as to the completeness, timeliness and accuracy of the information contained within this map. Users should confirm all information before making decisions based upon it.

